

E. Rivers Elementary

# GO Team Meeting

April 12, 2023

# Agenda

- I. Call to Order**
- II. Roll Call; Establish Quorum**
- III. Action Items**
  - a. Approval of Agenda
  - b. Approval of Previous Minutes:
- IV. Information Items**
  - a. Principal's Report
  - b. Cluster Advisory Team Report
  - c. GO Team Elections
  - d. New Math Standards & Resource
- V. Discussion Items**
  - a. BASC-3 Results
  - b. 2023 Spring MAPS results
  - c. Needs Assessment
- VI. Announcements**
- VII. Public Comment**
- VIII. Adjournment**

# Information Items



# Principal's Report





- Hiring Season
- Family Engagement
  - Event at Central Village on March 27
  - EREF Spring Social on April 28
- Milestones – May 1 – May 12
- Updates from Agape

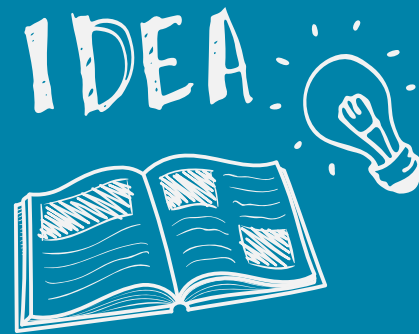
# Additional Information Items

- **Cluster Advisory Team Report**
- **GO Team Elections**
  - Find candidates at [apsstrongschools.com](https://apsstrongschools.com)
  - Vote **APRIL 18-27**
  - Households are sent a unique link based upon information in Infinite Campus
  - School Staff will be sent a link to their APS email address

# Announcements

- **GO Team Members**

- Check your email starting **May 1** for end of year survey links
  - GO Team Satisfaction Survey
  - Principal Feedback Survey
- Complete your required trainings **ASAP**
  - Contact the GO Team Office with any questions



# **New Georgia Math Standards & New APS math Resource**

- Ms. Amarius Reed,  
K-5 Mathematics  
Coordinator

# BASC-3 Data



## Behavioral and Emotional Risk Index

BESS-3 (Teacher)

● **Extremely Elevated Risk**

**3%**

17 students  
District average: 7%

● **Elevated Risk**

**10%**

62 students  
District average: 15%

● **Normal Risk**

**88%**

566 students  
District average: 78%



### Risk Distribution by Grade

Grade	●	●	●	
Kindergarten 107 students	89% 95	11% 12	0% 0	<div><div></div><div></div><div></div></div>
1st Grade 100 students	88% 88	7% 7	5% 5	<div><div></div><div></div><div></div></div>
2nd Grade 98 students	92% 90	3% 3	5% 5	<div><div></div><div></div><div></div></div>
3rd Grade 119 students	87% 103	12% 14	2% 2	<div><div></div><div></div><div></div></div>
4th Grade 115 students	85% 98	11% 13	3% 4	<div><div></div><div></div><div></div></div>
5th Grade 106 students	87% 92	12% 13	1% 1	<div><div></div><div></div><div></div></div>



# Behavioral and Emotional Risk Index

BEES-3 (Student)



**Extremely Elevated Risk**

**6%**

18 students  
District average: 6%



**Elevated Risk**

**15%**

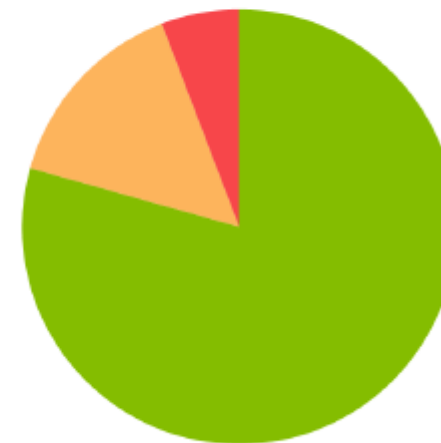
46 students  
District average: 18%



**Normal Risk**

**79%**

246 students  
District average: 75%



## Risk Distribution by Grade

**Grade**



**3rd Grade**

110 students

**84%**

92

**13%**

14

**4%**

4



**4th Grade**

102 students

**76%**

78

**20%**

20

**4%**

4



**5th Grade**

98 students

**78%**

76

**12%**

12

**10%**

10



# Behavioral and Emotional Risk Index

BEES-3 (Parent)

● **Extremely Elevated Risk**

**0%**

0 students  
District average: 2%

● **Elevated Risk**

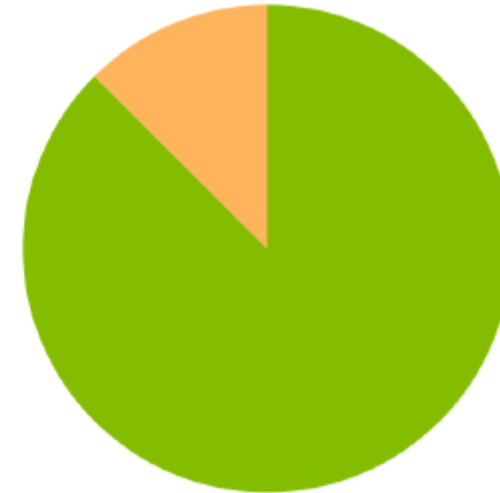
**12%**

1 students  
District average: 9%

● **Normal Risk**

**88%**

7 students  
District average: 88%



## Risk Distribution by Grade

**Grade**

Kindergarten  
4 students

100%  
4

0%  
0

0%  
0

1st Grade  
2 students

100%  
2

0%  
0

0%  
0

2nd Grade  
1 students

100%  
1

0%  
0

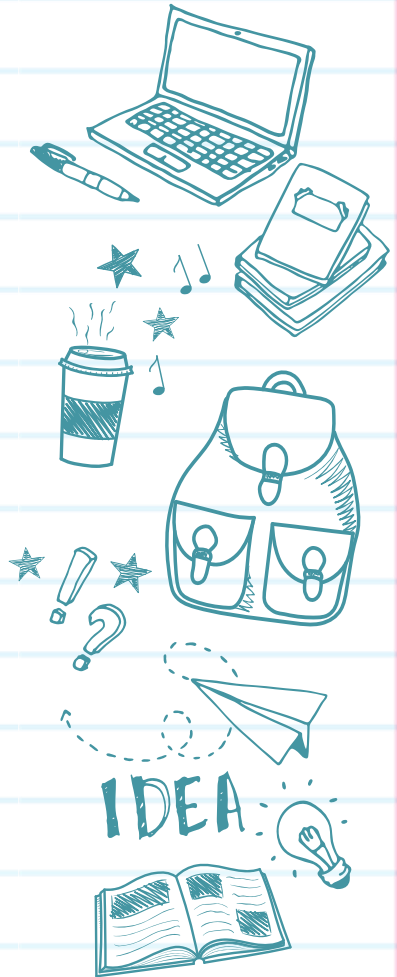
0%  
0

5th Grade  
1 students

0%  
0

100%  
1

0%  
0



# 2023 Spring MAP Results

## Data Points to Consider

- Spring Results
- Fall to Spring Comparison
  - Literacy
  - Numeracy



## Growth Target Category\* Percentage (Math)

Data updates nightly  
during test window.



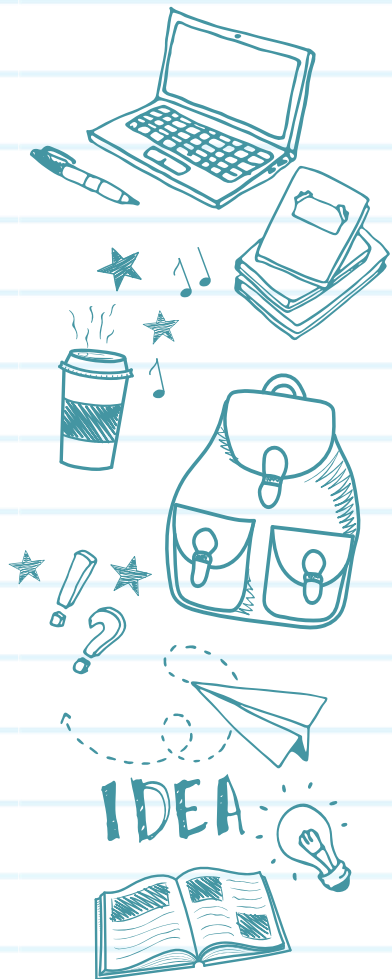
[Click on a school below to see grade-level performance.](#)

\*The determination of whether or not a student met/exceeded their growth target is based on a calculation comparing the projected and observed growth. Each of these growth measures, as well as RIT scores in general, come with a standard error of measurement (SEM) meaning that the true score/growth lies within a range of values. We currently do not know how well MAP Growth data may align with Milestones SGP data – so each of these percentages will most likely vary from what a school and individual student might expect to see with growth data on the Georgia Milestones.

School	Growth Timeframe	Exams			
DISTRICT	Fall to Spring (same school year)	28,210	60%	5%	35%

School	Growth Timeframe	Exams			
Garden Hills	Fall to Spring (same school year)	332	52%	6%	42%
Brandon	Fall to Spring (same school year)	788	55%	6%	39%
Jackson Elementary	Fall to Spring (same school year)	399	56%	5%	38%
E Rivers	Fall to Spring (same school year)	573	62%		33%
Bolton	Fall to Spring (same school year)	440	71%		25%
Smith	Fall to Spring (same school year)	732	76%		20%

School	☰	Growth Timeframe	Tested Grade	Exams			
E Rivers		Fall to Spring (same school year)	KK	97	53%	8%	39%
			01	82	65%		34%
			02	82	57%		39%
			03	113	54%	6%	40%
			04	100	78%	5%	17%
			05	99	68%		31%



# Math

## MAP Growth Achievement Level Predictions by School

Georgia Milestones Achievement Level Predictions are only made for Grades 2-8

(\*Reading tests taken in Spanish are not given a GAMAS Achievement Level)

\*click in a school or district row to see grade level performance if there are above 10 students per grade\*

Data updates  
nightly  
during test  
window.



School	Window	Exams				
DISTRICT	Fall 2022-2023	18,300	32%	37%	20%	11%
	Winter 2022-2023	18,633	36%	34%	20%	9%
	Spring 2022-2023	18,395	40%	33%	18%	9%

School	Window	Exams				
E Rivers	Fall 2022-2023	430	20%	32%	32%	16%
	Winter 2022-2023	434	21%	30%	35%	14%
	Spring 2022-2023	428	21%	36%	29%	13%



# Growth Target Category\* Percentage (Reading)

Data updates nightly during test window.



Click on a school below to see grade-level performance.

\*The determination of whether or not a student met/exceeded their growth target is based on a calculation comparing the projected and observed growth. Each of these growth measures, as well as RIT scores in general, come with a standard error of measurement (SEM) meaning that the true score/growth lies within a range of values. We currently do not know how well MAP Growth data may align with Milestones SGP data – so each of these percentages will most likely vary from what a school and individual student might expect to see with growth data on the Georgia Milestones.

School	Growth Timeframe	Exams		
DISTRICT	Fall to Spring (same school year)	28,360	56%	39%

School	Growth Timeframe	Exams		
Bolton	Fall to Spring (same school year)	451	45%	51%
Jackson Elementary	Fall to Spring (same school year)	405	48%	45%
Brandon	Fall to Spring (same school year)	798	48%	48%
Smith	Fall to Spring (same school year)	750	53%	41%
Garden Hills	Fall to Spring (same school year)	365	55%	41%
E Rivers	Fall to Spring (same school year)	567	55%	40%

School	☰	Growth Timeframe	Tested Grade	Exams		
E Rivers		Fall to Spring (same school year)	KK	90	57%	39%
			01	89	57%	37%
			02	82	49%	50%
			03	112	62%	35%
			04	100	50%	43%
			05	94	52%	36%



# Reading

## MAP Growth Achievement Level Predictions by School

Georgia Milestones Achievement Level Predictions are only made for Grades 2-8

(\*Reading tests taken in Spanish are not given a GAMAS Achievement Level)

\*click in a school or district row to see grade level performance if there are above 10 students per grade\*

Data updates  
nightly  
during test  
window.



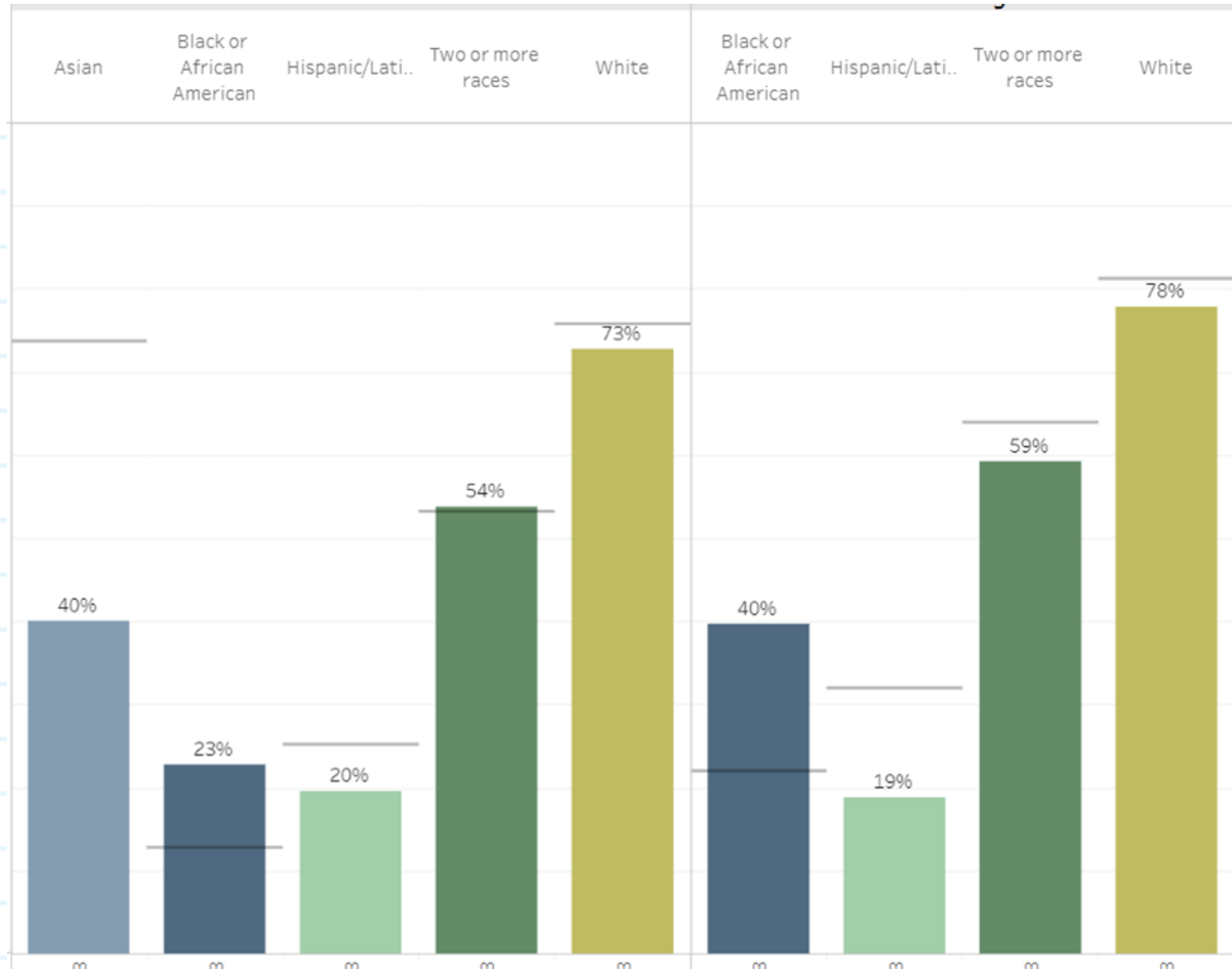
School	Window	Exams				
DISTRICT	Fall 2022-2023	18,288	35%	28%	24%	13%
	Winter 2022-2023	18,727	38%	26%	23%	13%
	Spring 2022-2023	18,448	38%	27%	23%	13%

School	Window	Exams				
E Rivers	Fall 2022-2023	419	23%	25%	33%	20%
	Winter 2022-2023	435	22%	28%	29%	21%
	Spring 2022-2023	427	24%	26%	31%	19%



# Math

# Reading



# Needs Assessment

## ACTIVITY



### Needs Assessment

During this Needs Assessment, we will look at data from the Spring MAPS administration and identify 2-3 potential needs for the 2023-2024 school year.

This discussion will help school leadership as they begin developing the school's 2023-2024 Continuous Improvement Plan this summer.

# Needs Assessment: Guiding Questions

- What does this data tell us?
- What good news is there to celebrate?
- Where are growth opportunities?
- What trends do we see in the data?

# Needs Assessment:

What are two to three (2-3) needs we can identify based our data?

	Need
1	
2	
3	





Thank  
You

for yet another  
great year!

